



Company : Beach Petroleum Ltd

Well : PeeJay-1

Interval : 95.00 - 1661.09 meters

Created : 25/Nov/2008 6:20:47 AM



INTEQ

### FORMATION EVALUATION LOG

DRILLING PARAM		MD meters	Oil Show P F G	LITHOLOGY %	CORE	TOTAL GAS	CHROMATOGRAPH	Calcmetry	Lithology Description
ROP (m/hr)						Total Gas (unit)	Methane ppm		
200	160	1:500				10   20   30   40   50	0.1 Methane ppm 10000		
WEIGHT ON BIT (klbf)						0.1 Ethane ppm 10000			
10	20					0.1 Propane ppm 10000			
						0.1 iso-Butane ppm 10000			
						0.1 n-Butane ppm 10000			
						0.1 iso-Pentane ppm 10000			
						0.1 n-Pentane ppm 10000			

		100							Spud PeeJay-1 @ 18:30 Hrs on 15/11/2008
		110							RT MSL: 34.15mMDRT Water Depth: 78.00mMDRT RT Seabed: 112.15mMDRT
		120							Drill 36" hole with seawater & Hi Vis sweeps Returns to Seabed 112.15m to 218m
		130							
		140							
		150							
		160							
		170							
		180							
		190							

RB1: 660mm (26") x 914mm  
(36") H/Opener  
Make: Reed  
Type: Rock/YC11  
Jets: 3x22, 1x16  
Depth In: 112.15m  
Depth Out: 218.0m  
Drilled 105.85m in 3.9hrs  
Grade: 1-1-NO-A-E-I-NO-TD



WOB: 1-10 klbf  
RPM: 117-120  
GPM: 953-954  
SPP: 660-827 psi

Set 762mm (30") conductor at 216

NB2: 406mm (16")  
Make: Hughes  
Type: Rock/GX-1V  
Jets: 3x20  
Depth In: 218.0m  
Depth Out: 810.0m  
Drilled 892.0m in 11.6hrs  
Grade: 1-1-NO-A-E-I-NO-TD

WOB: 1-10 klbf  
RPM: 78-147  
GPM: 600-1200  
SPP: 495-2123 psi

200  
210  
220  
230  
240  
250  
260  
270  
280  
290  
300  
310  
320  
330

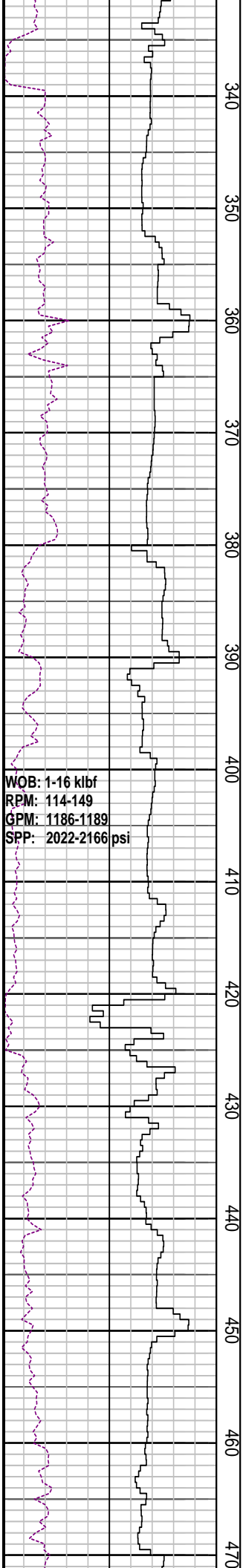
Drill 16" hole with seawater & Hi Vis  
sweeps  
Returns to Seabed 218m to 810m

MD: 269.95, AZI: 150.86°  
TVD: 264.9, Incl: 1.45°

MD: 294.47, AZI: 140.54°  
TVD: 294.4, Incl: 1.15°

Returns to Seabed

MD: 323.97, AZI: 150.84°  
TVD: 323.9, Incl: 1.06°

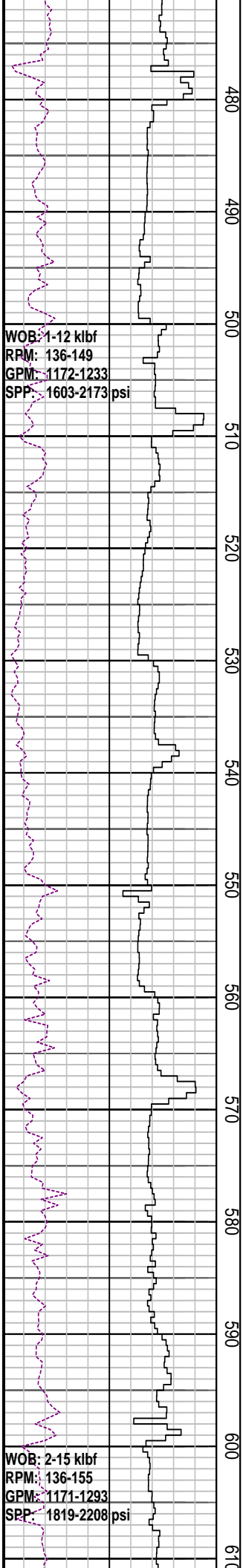


340  
350  
360  
370  
380  
390  
400  
410  
420  
430  
440  
450  
460  
470

WOB: 1-16 kbf  
RPM: 114-149  
GPM: 1186-1189  
SPP: 2022-2166 psi

Returns to Seabed

MD: 413.38, AZI: 197.79°  
TVD: 413.3, Incl: 0.46°

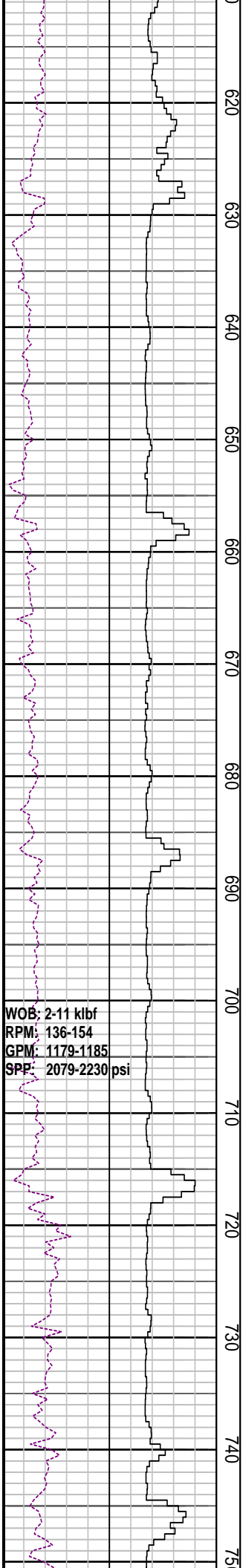


Returns to Seabed

MD: 502.18, AZI: 197.76°  
TVD: 502.1, Incl: 0.23°

MD: 591.8, AZI: 226.93°  
TVD: 591.7, Incl: 0.37°

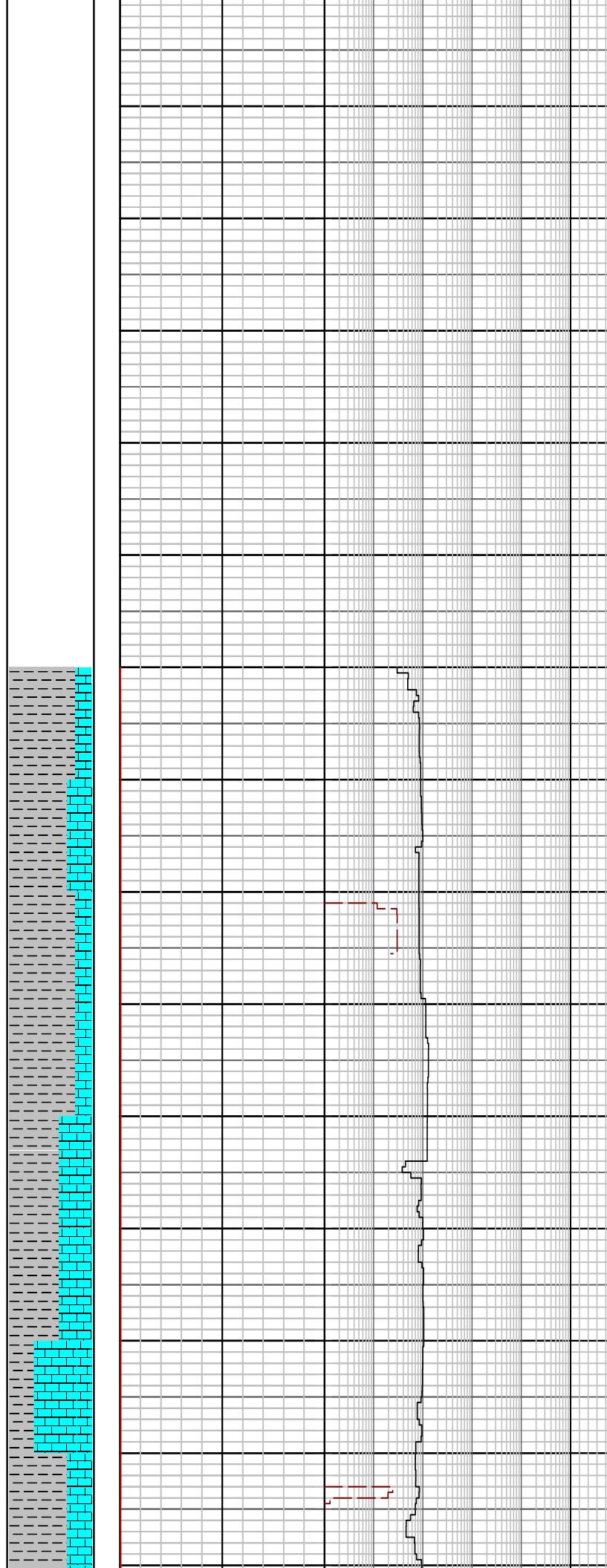
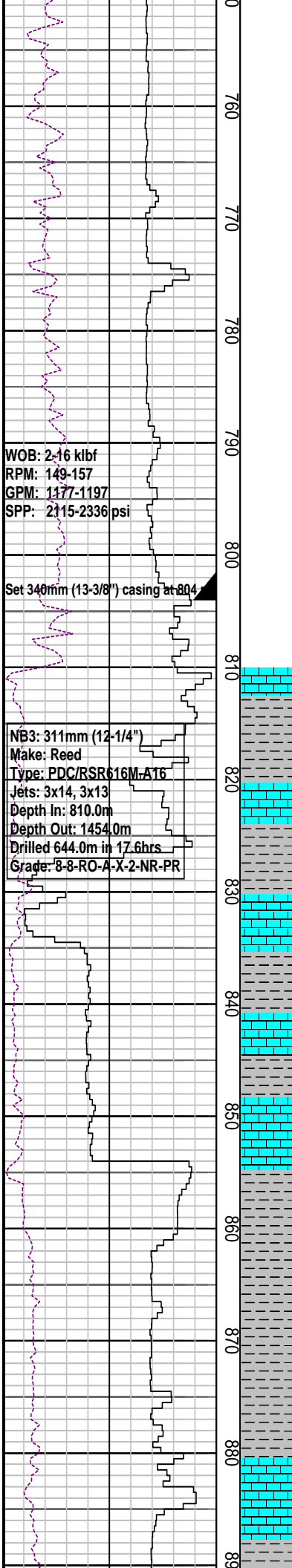
Returns to Seabed



WOB: 2-11 kbf  
RPM: 136-154  
GPM: 1179-1185  
SPP: 2079-2230 psi

MD: 679.52, AZI: 321.43°  
TVD: 679.5, Incl: 0.12°

Returns to Seabed



MD: 768.28, AZI: 271.31°  
 TVD: 768.2, Incl: 0.20°

Returns to Seabed

MD: 803.99, AZI: 236.85°  
 TVD: 803.9, Incl: 0.21°

LIMESTONE: Bio clear pale yel brn to lt brn gy, f to md, micr, com cor frag, com md to crs, wh calc, f por, n fluor

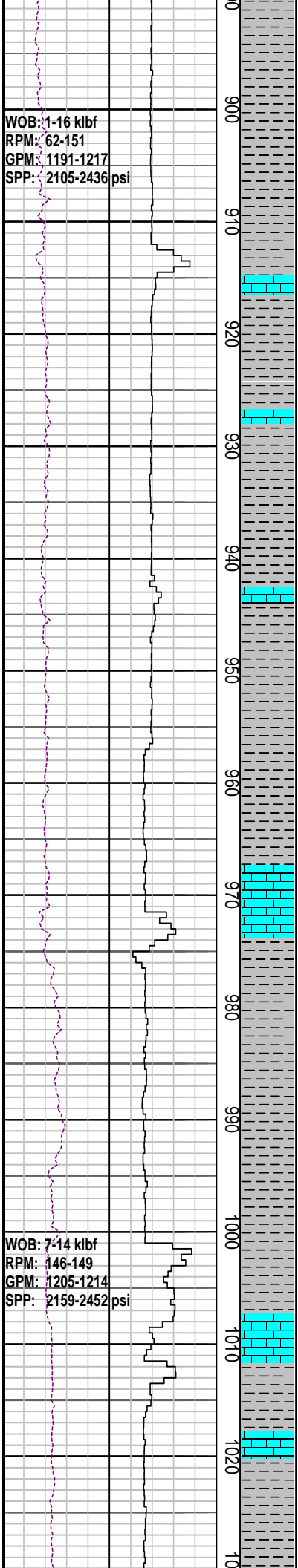
LOT @ 804m with 8.8 ppg  
 EMW: 15.55 ppg @ 928 psi

CLAYSTONE: lt bl gy, mod sft, ang f sli slit, p srt, mod calc, Ls md mtrx, p vis por

MD: 842.85, AZI: 127.38°  
 TVD: 842.8, Incl: 0.43°

CLAYSTONE: lt bl gy, mod sft, ang f sli slit, p srt, mod calc cmt, Ls md mtrx, p vis por, tr nod pyr

LIMESTONE: gn gry- med bl gry, frm-m, micr, com-med calc spar, tr foss frag, tr cor, p por, n fluor



CLAYSTONE: med lo-dk gn, mod sft-frm,  
 wl srt, tr pyr, tr foss

MW: 8.80 ppg    FV:50  
 PV : 17        YP:23  
 Gels: 5/7/8  
 CI : 37000

MD: 930.97, AZI: 102.94°  
 TVD: 930.9, Incl: 0.44°

CLAYSTONE: med lo-dk gn, mod  
 sft-frm, stky, wl srt, tr foss

LIMESTONE: gn gry- med bl gry, frm-m,  
 micr, com-med calc spar, tr foss frag, tr  
 cor, p por, n fluor

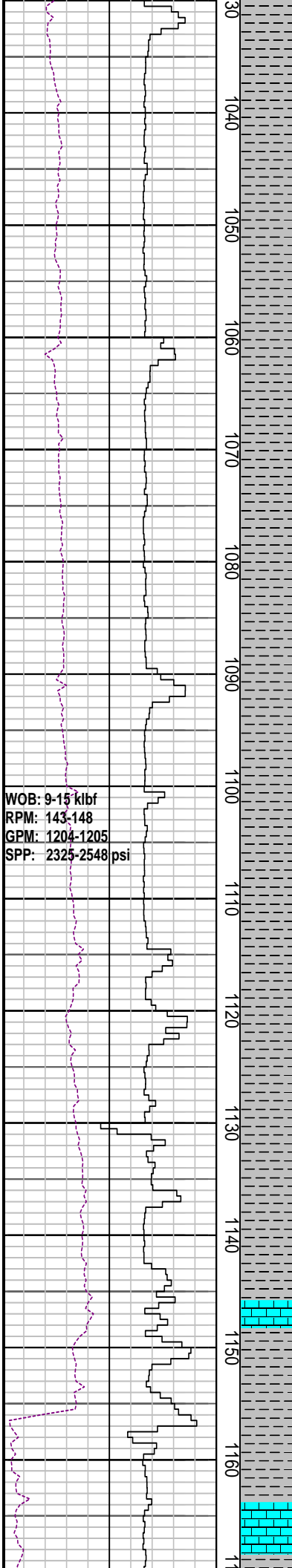
CLAYSTONE: med lo-dk gn, mod sft-frm,  
 wl srt, tr pyr, tr foss, tr sst

CLAYSTONE: med lo-dk gn, mod sft-frm,  
 wl srt, tr pyr, tr foss

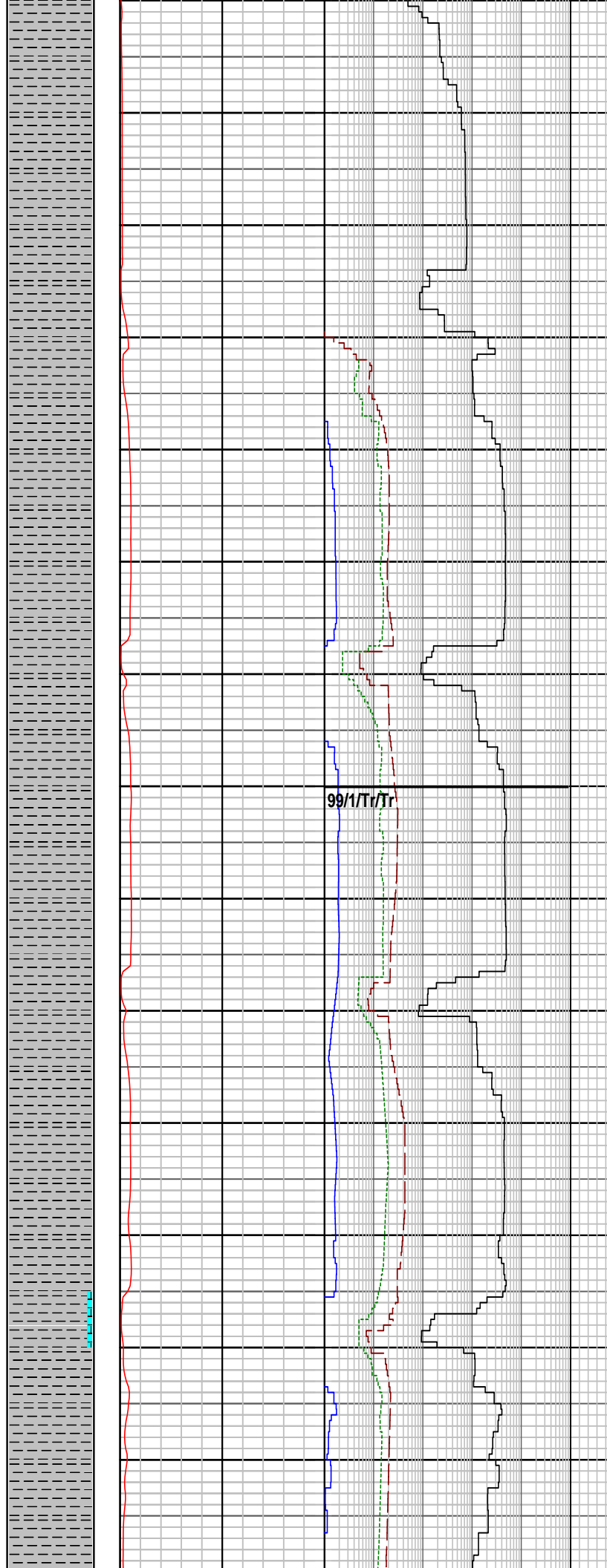
LIMESTONE: gn gry- med bl gry, frm-m,  
 micr, com-med calc spar, tr foss frag, tr  
 cor, p por, n fluor

CLAYSTONE: med lo-dk gn, mod sft-frm,  
 wl srt, tr pyr, tr foss, tr glau

MD: 1019.59, AZI: 112.01°  
 TVD: 1019.5, Incl: 0.43°



30  
1040  
1050  
1060  
1070  
1080  
1090  
1100  
1110  
1120  
1130  
1140  
1150  
1160  
1170



CLAYSTONE: med lo-dk gn, mod sft-frm,  
 wl srt, tr pyr, tr foss, tr sst

LIMESTONE: gn gry- med bl gry, frm-m,  
 micr, com-med calc spar, tr foss frag, tr  
 cor, p por, n fluor

MD: 1048.56, AZI: 126.08°  
 TVD: 1048.5, Incl: 0.33°

CLAYSTONE: med lo-dk gn, mod sft-frm,  
 wl srt, tr foss

CLAYSTONE: med lo-dk gn, mod sft-frm,  
 wl srt, tr pyr, tr foss, tr sst

LIMESTONE: gn gry- med bl gry, frm-m,  
 micr, com-med calc spar, tr foss frag, tr  
 cor, p por, n fluor

CLAYSTONE: olv gy- bn gy, sft-frm mod  
 hd ip, sbbiky-blky, tr pyr, tr v f carb mat,  
 tr glau, tr cor

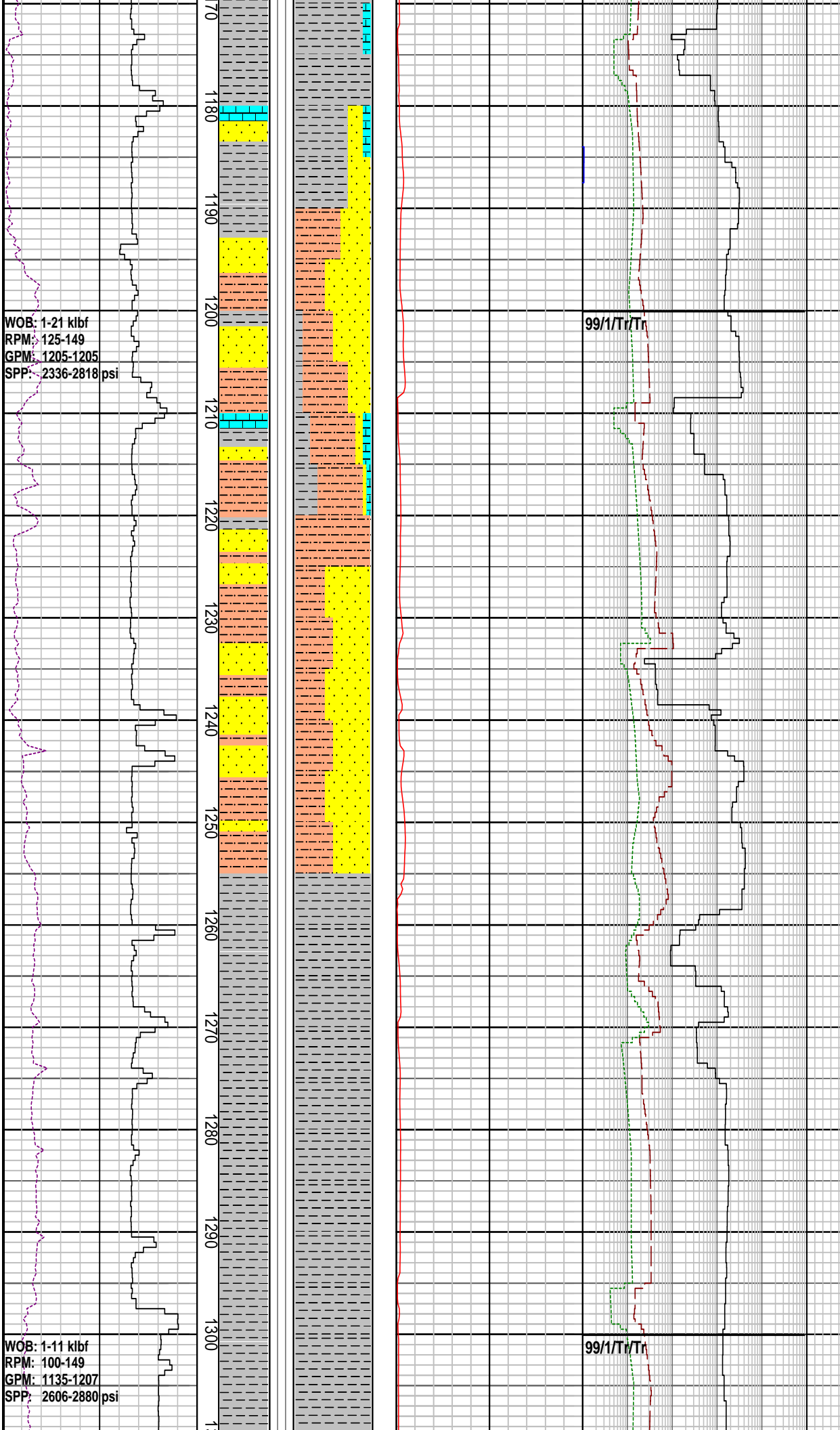
MD: 1108.49, AZI: 130.22°  
 TVD: 1108.4, Incl: 0.33°

CLAYSTONE: olv gy- bn gy, sft-frm mod  
 hd ip, sbbiky-blky, tr pyr, tr v f carb mat,  
 tr glau, tr cor

LIMESTONE: gn gry- med bl gry, frm-m,  
 micr, com-med calc spar, tr foss frag, tr  
 cor, p por, n fluor

CLAYSTONE: olv gy- bn gy, sft-frm mod  
 hd ip, sbbiky-blky, tr pyr, tr v f carb mat,  
 tr glau, tr cor, tr cht





CLAYSTONE : brn blk- olv blk, sft-frm  
mod hd ip, sbblky-blky, tr pyr, tr v f carb  
mat , tr cht

MD: 1167.38, AZI: 121.98°  
TVD: 1167.3, Incl: 0.22°

SANDSTONE : brn gy, trnsp-trnsl qtz gr,  
tr yel brn, stn dom f, md-crs, mod-wl srt,  
sbang-wl rndd, n vis cmt, mnr arg slit  
mtrx, fr inferred por

SILTSTONE: ol gy-md dk gy, v sli calc, r  
nod pyr, sbblky grd to pyr

CLAYSTONE: brn gy-brn blk, sft-frm  
mod hd ip, sbblky-blky, tr pyr, tr v f carb  
mat , tr cht, tr sd

MW: 9.5 ppg	FV:65
PV : 19	YP:32
Gels: 7/9/11	
Cl : 35000	

CLAYSTONE: brn gy-brn blk, sft-frm  
mod hd ip, sbblky-blky, tr v f carb mat ,  
tr cht, tr foss frag, tr sd

SANDSTONE : brn gy, trnsp-trnsl qtz gr,  
tr yel brn, stn dom f, md-crs, mod-wl srt,  
sbang-wl rndd, n vis cmt, mnr arg slit  
mtrx, fr inferred por

CLAYSTONE: md dk gy-dk gy, v sli calc,  
mnr com pyr, sli slit, sft-plas sbblky

SANDSTONE : brn gy, trnsp-trnsl qtz gr,  
tr yel brn, stn dom f, md-crs, mod-wl srt,  
sbang-wl rndd, n vis cmt, mnr arg slit  
mtrx, fr inferred por

MD: 1285.81, AZI: 61.10°  
TVD: 1285.8, Incl: 0.69°

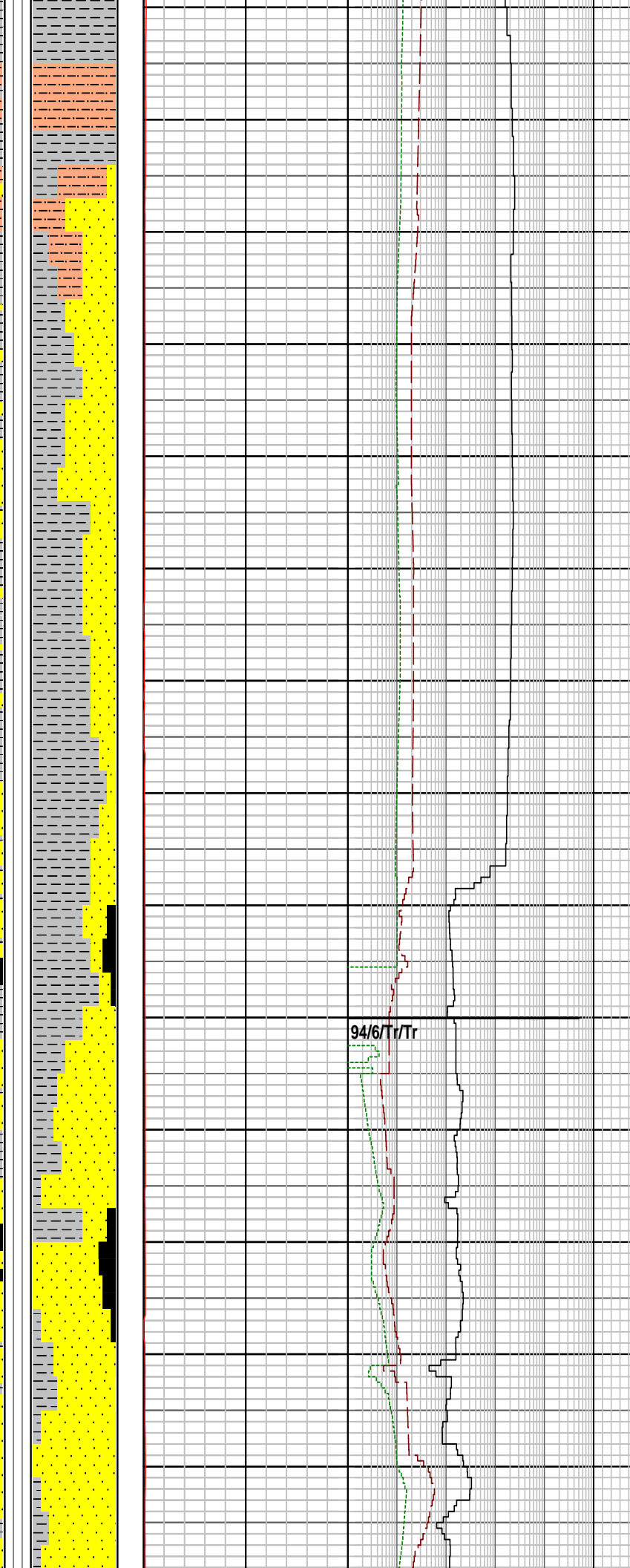
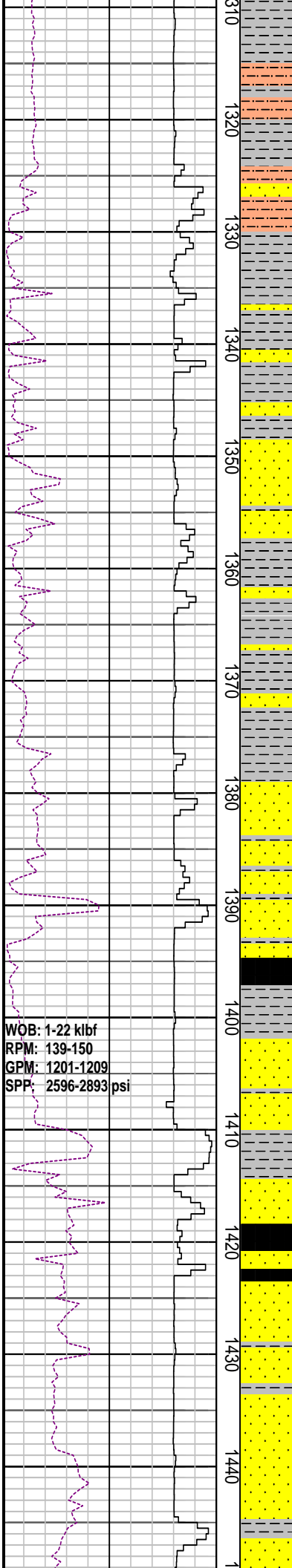
CLAYSTONE: md dk gy-dk gy, v sli calc,  
mnr com pyr, sli slit, sft-plas sbblky

WOB: 1-21 kbf  
RPM: 125-149  
GPM: 1205-1205  
SPP: 2336-2818 psi

WOB: 1-11 kbf  
RPM: 100-149  
GPM: 1135-1207  
SPP: 2606-2880 psi

99/1/Ti/Ti

99/1/Ti/Ti



SILTSTONE: md dk gy-dk gy, v sli calc, tr pyr, arg in pt, grd to Clst, sft to frm, tr plas, dom sbbly

CLAYSTONE: brn gy, sli calc, sft pyr, amor

SANDSTONE : lt ol gy, trnsp-trnsl qtz gr, dom wl srt, sbang-wl rndd, wk calc cmt, mnr fri agg, tr nod pyr, fr inferred por

MD: 1345.01, AZI: 106.82°  
 TVD: 1345, Incl: 0.68°

CLAYSTONE: brn gy to ol blk, sli calc, v f qtz, amor, sli dispersive mass

MD: 1374.54, AZI: 110.27°  
 TVD: 1374.5, Incl: 0.67°

SANDSTONE : lt ol gy, trnsp-trnsl qtz gr, dom wl srt, sbang-wl rndd, wk calc cmt, mnr fri agg, tr nod pyr, fr inferred por

COAL: dk brn blk, mod sft-hd, ang planar, conch-frac

94/6/Ti/Tr

SANDSTONE: qtz, clr-trnsl, md gy in pt, f-pred crs to v crs, ang to subrnnd, p srt, wk calc cmt, loc com arg mtrx, abd v crs mky qtz, tr Fe stn qtz, fri to pred disaggregated fr-g

COAL: dk brn blk, mod sft-hd, ang planar, conch-frac

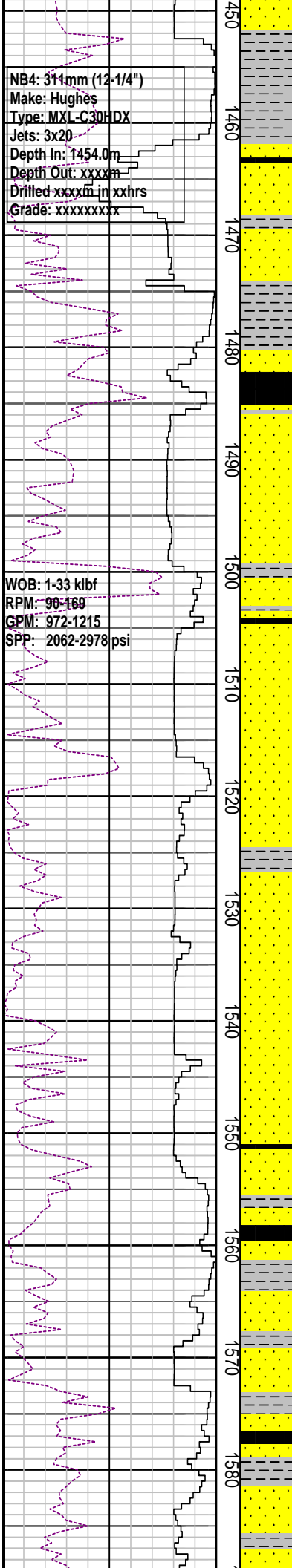
SANDSTONE: mky qtz, clr-trnsl, md gy in pt, f-crs, ang to subrnnd, p srt, wk calc cmt, com arg mtrx, fr-gd por, n fluor

MD: 1433.56, AZI: 132.78°  
 TVD: 1433.5, Incl: 0.69°

SANDSTONE: qtz, clr-trnsl, lt gy in pt, f-pred crs- v crs, ang to subrnnd, p srt, wk

NB4: 311mm (12-1/4")  
 Make: Hughes  
 Type: MXL-C30HDX  
 Jets: 3x20  
 Depth In: 1454.0m  
 Depth Out: xxxxm  
 Drilled xxxxm in xxhrs  
 Grade: xxxxxxxx

WOB: 1-33 klbf  
 RPM: 90-169  
 GPM: 972-1215  
 SPP: 2062-2978 psi



**Carbide Run @**  
 1532mMDRT  
 Theoretical: 4914 Stks  
 Actual: 5396 Stks  
 Hole Wash Out: 13.4%

100/0

calc cmt, pred cln, com crs mky qtz, t musc, tr coral deb, tr nod pyr, disaggregated fr-gd

CLAYSTONE: It brn-lt yel gy, sft frm ip, mass-amor occ blkly, tr carb mat, tr foss frag

COAL: dk brn blk, mod sft-hd, ang planar, conch-frac

SANDSTONE: qtz, clr-trnsl, lt gy in pt, f-pred crs - v crs, ang to subrndd, p srt, wk calc cmt, pred cln, com crs mky qtz, tr musc, gd por, no fluor

MD: 1492.77, AZI: 331.27°  
TVD: 1492.7, Incl: 0.31°

CLAYSTONE : md brn gy to ol gy, sii calc in pt, loc sli slit, tr carb spks, occ lit frag, frm, blkly in pt

SANDSTONE: qtz, clr-trnsl, lt gy in pt, f-pred f-crs, ang to subrndd, p srt, wk calc cmt, pred cln, com crs mky qtz, tr musc, gd por, nod pyr, no fluor

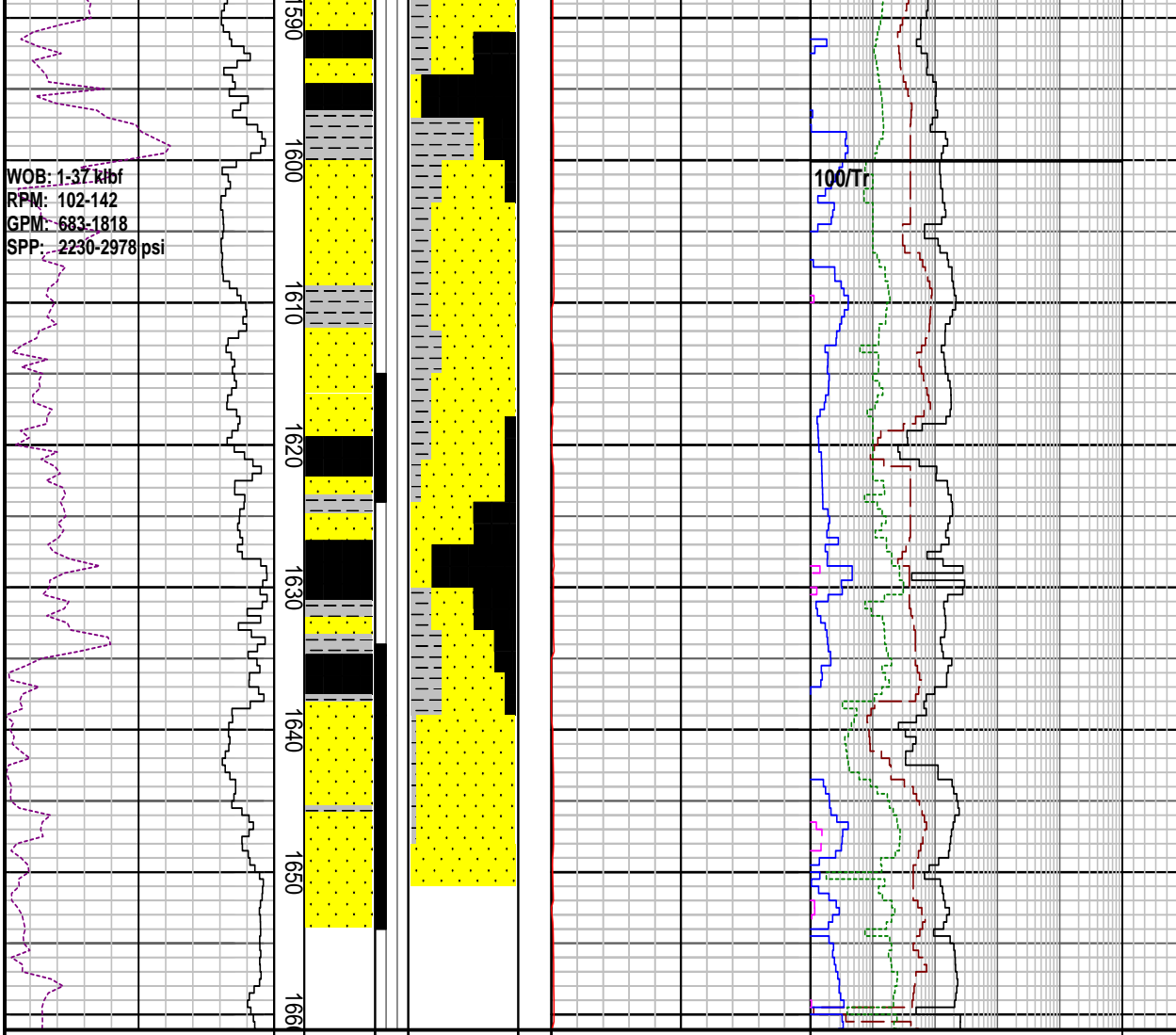
MD: 1552.04, AZI: 350.47°  
TVD: 1552.0, Incl: 0.35°

COAL: dk blk, brit, hd, ang planar, conch-frac, tr qtz sand

CLAYSTONE: yel gy to lt brn gy, md lt gy, sii calc, sii slit, dom dispersive

SANDSTONE: qtz, clr to transl, f to gran, ang to sbrnrd, v p srt, cln, tr qtz overgrowths, tr smky qtz, disaggreg, gd por, n fluo

COAL: dk blk, brit, hd, ang planar, conch-frac, tr qtz sand



COAL: dk blk, brit, hd, ang planar, conch-frac, tr qtz sand

SANDSTONE: qtz, clr to transl, f to gran, ang to sbrndd, v p srt, cln, tr qtz overgrowths, tr smky qtz, disaggreg, gd por, tr yel min fluor

FLUORESCENCE(1615): tr p.p. mod bri yel fluor, v slw mky stmg cut, n res ring

COAL: dk blk, brit, hd, ang planar, conch-frac, tr qtz sand

CLAYSTONE: yel gy to lt brn gy, md lt gy, sli calc, grd to Sltst

FLUORESCENCE(1634): 5% p.p. dull yel fluor, v slw mky stmg cut, n res ring

FLUORESCENCE(1639): 80% p.p. dull yel fluor, v slw mky stmg cut, n res ring

MD: 1640.51, AZI: 28.44°  
 TVD: 1640.4, Incl: 0.45°

SANDSTONE: qtz, clr to transl, f to gran, ang to sbrndd, v p srt, cln, tr qtz overgrowths, tr smky qtz, disaggreg, gd por, 80% brt yel fluor, stmg cut fluor

### FORMATION EVALUATION LOG

DRILLING PARAM		MD meters 1:500	OIL SHOW P F G	LITHOLOGY %	CORE	TOTAL GAS	CHROMATOGRAPH	Calimetry	Lithology Description
ROP (m/hr)	WEIGHT ON BIT (klbf)					Total Gas (unit)	Methane ppm		
200	160	120	80	40		10   20   30   40   50	0.1 Methane ppm 10000		
							0.1 Ethane ppm 10000		
							0.1 Propane ppm 10000		
							0.1 iso-Butane ppm 10000		
							0.1 n-Butane ppm 10000		
							0.1 iso-Pentane ppm 10000		
							0.1 n-Pentane ppm 10000		